

**F.P.E.C. CORP. DBA
FOOD PROCESSING EQUIPMENT CO.**



conveyors - food machinery

3636-38 FRUITLAND AVE. MAYWOOD, CALIF. 90270



In 1959, FPEC Corp.'s humble start led us to a 20' x 20' metal shed in Bellflower, CA. After initial growth, we moved into a 1,500 sq. ft. building in Vernon, CA. Continuing to grow, Maywood, CA. was the next stop opening a 3,000 sq. ft. manufacturing facility in 1963, producing conveyors, tables, tanks, & breading machines.



THE "FPS CONNECTION"
**FOOD
PROCESSING
EQUIPMENT
CO.**



After the introduction of our ground beef incline conveyor & beef fabrication equipment in the late 60's, FPEC manufactured its first blender and entered the market of larger, more sophisticated equipment and systems. With continual growth, another move was necessary to a 6,000 sq. ft. Santa Fe Springs, CA. location.



1980's-90's

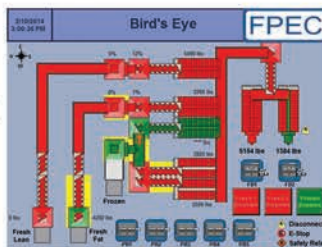
The 80's and 90's brought growth & expansion for FPEC. After moving in 1984 to our 18,000 sq. ft. second location in Santa Fe Springs, CA., we expanded east to Springdale, AR. establishing our place in the poultry processing side of the industry. In 1995 we added 24,000 sq. ft. of work space to the Springdale facility, which is now our current headquarters.



**THE EVOLUTION OF SUPERIOR
QUALITY, SERVICE, &
INNOVATIVE DESIGN
SINCE 1959**



As we moved into the next millennium, another 40,000 sq. ft. expansion was necessary to keep up with product demand. As progress continued, FPEC has become a global equipment manufacturing leader for the meat, poultry, prepared foods, & pet food industries with a reputation for innovative, outside-the-box ideas, which helps streamline production & efficiency.



FPEC.COM