



ROSS STATIC MIXERS

Turbulent-flow mixing with no moving parts. And no maintenance hassles!

The Ross LPD Static Mixer is an extremely efficient in-line mixer. Installed in a pipeline, a series of semi-elliptical plates systematically split and recombine a fluid stream to achieve a homogeneous mix with only 4-6 modules. This patented Ross design can be applied to a multitude of food applications.

The LPD Static Mixer is maintenance-free and delivers a virtually unlimited operating life. Initial equipment costs and ongoing energy requirements are also low, which makes this one of the most efficient mixers ever created.

Instant gas & liquid mixing with an ultra-low pressure drop.

The Ross LPD and LLPD Static Mixers (designed for low and ultra-low pressure drop, respectively) are available in configurations that allow fast disassembly for cleaning and inspection. For food applications, they are generally constructed in Type 316 stainless steel. Both housings and elements are polished to a No.4 finish, but a mirror finish is available both internally and externally.

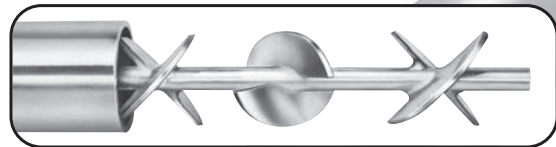
The ISG Static Mixer for laminar flow.

The ISG mixer is another Ross exclusive, designed especially to mix materials at higher viscosities. Mixing is mathematically predictable – and exponentially efficient. Two ISG elements in succession split the stream into 32 layers. Three produce 128 layers. A series of ten elements split the stream into more than 2 million layers – in seconds.

ISG mixers are available in standard sizes from ½" to 24" diameter, and they are constructed in materials including stainless steel, Teflon and polypropylene.

Ross Static Mixing Advantages

- Competitive pricing
- Easy installation
- Many sizes in stock
- Easily cleaned & inspected
- Buy from the world's leading mixer manufacturer
- Low operating cost
- No maintenance

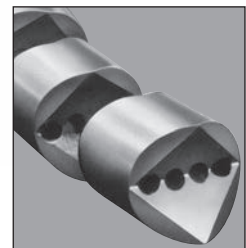


The LPD Static Mixer is available in standard sizes to accommodate pipe from 1" to 30" diameter, in 2-element to 36-element modules.

Combined with a shell-and-tube heat exchanger, a Ross LPD Static Mixer can reduce fouling, eliminate center channeling, and increase heat-exchange efficiency by 300-500%. Standard sizes from 1" to 12" diameter.



In the ISG Static Mixer, four holes bored through the elements provide flow paths that separate and recombine viscous material and achieve complete homogeneity.



Learn more about our complete static mixing systems.

Ross systems can include LPD, LLPD or ISG static mixers, pumps, flow meters and fully integrated control panels.

Contact Ross today – and lower your mixing costs with a Ross Static Mixer.

1-800-243-ROSS
www.StaticMixers.com

